

## Practitioners



**Brendan Armm, DAOM, LAc -- Founder / Director**  
**Doctor of Acupuncture and Oriental Medicine**

Dr. Armm is among fewer than fifty practitioners nationally with a clinical Doctorate in Orthopedics, Pain Management & Integrative Medicine.



**Dorine Karlin, ND, LAc**  
**Naturopathic Doctor, Acupuncture and Oriental Medicine**

Neurotransmitter & hormonal balancing, homeopathy, neuro-emotional technique, cranio-sacral, and bio-therapeutic drainage.



**Richard C. Hsu, LAc**  
**Acupuncture and Oriental Medicine**

Richard specializes in pain management, allergies and infertility. He has over 20 years experience in Tai-Chi Chuan and Qi Gong.



**Sarah Murphy, ND, LAc**  
**Naturopathic Doctor, Acupuncture and Oriental Medicine**

Botanical medicine, homeopathy, nutrition and supplements, hydrotherapy, lifestyle counseling, acu-energetic meridian therapy, medical qi gong and yoga.



**Won mi Kim, LAc**  
**Acupuncture and Oriental Medicine**

An integrative energetic mind-body approach specializing in stress management, psycho-emotional disorders, women's health, digestive issues and lifestyle counseling.

2104 Wilshire Blvd, Santa Monica, CA 90403

310.828.8258 info@lotusew.com lotusew.com

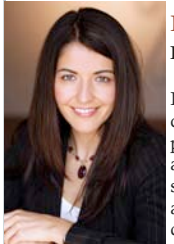
Holistic and Environmentally Conscious Primary Care Medicine

## Practitioners



**Ann Marie Nguyen, ND, LAc**  
**Naturopathic Doctor, Acupuncture and Oriental Medicine**

General medicine (colds, physicals, etc.), digestive disorders, allergies, endocrine disorders, fatigue, anxiety, women's health and detox.



**Deborah E. Anderson, PhD**  
**Psychology & Neuropsychology**

Dr. Anderson offers individual & couples psychotherapy, & neuropsychological and psychological assessments. Specialties: relationship/communication, stress/anxiety/depression/anger, self-destructive patterns, and pain.



**Jessica Marier, ND**  
**Naturopathic Doctor**

Dr. Marier's family practice provides compassionate and comprehensive healthcare, while utilizing classical homeopathy as her primary means of providing safe and effective treatment.

# Holistic and Environmentally Conscious Primary Care Medicine

2104 Wilshire Blvd, Santa Monica, CA 90403

310.828.8258 info@lotusew.com lotusew.com

Printed on 100% post-consumer recycled